

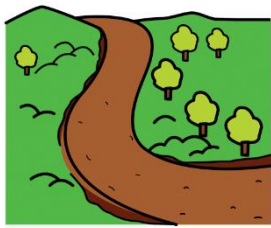


Da Termini a Castelgandolfo lungo la Via Francigena del Sud

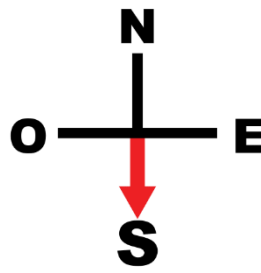


a piedi

Guida in CAA
Comunicazione
Aumentativa Alternativa



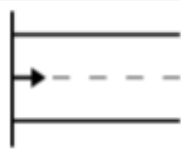
Via Francigena



del Sud



La Via Francigena



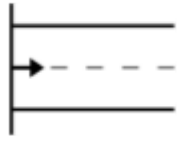
comincia



dalla Stazione Termini

e

e



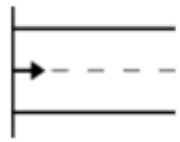
arriva



al Castel Gandolfo



Percorrendola



si passa



per la via



del Sud



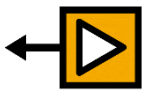
I pellegrini



fanno



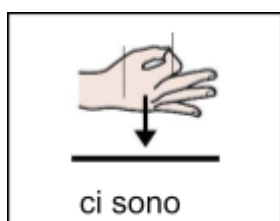
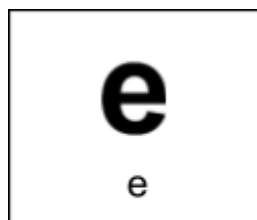
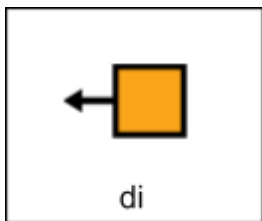
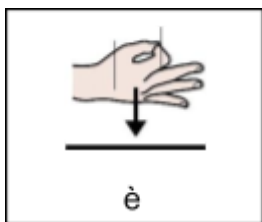
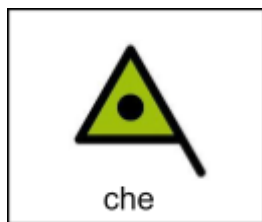
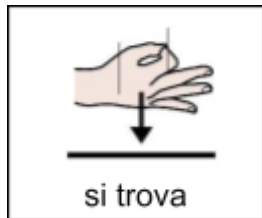
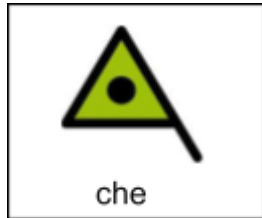
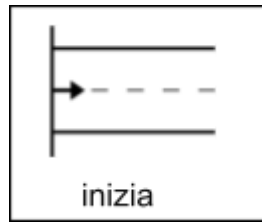
il cammino



dei



religiosi





mosaici



antichi



creati



con



pietre



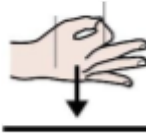
colorate



Nella



Basilica



ci sono



anche



oggetti religiosi



Continuando



il percorso



si arriva



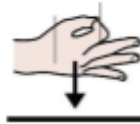
al palazzo



Merulana



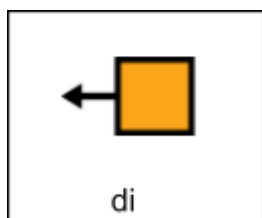
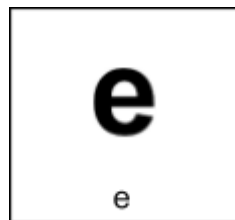
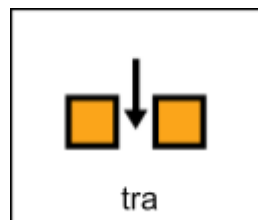
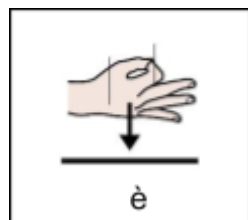
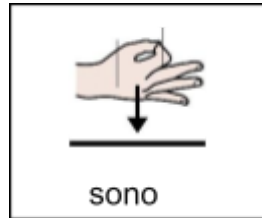
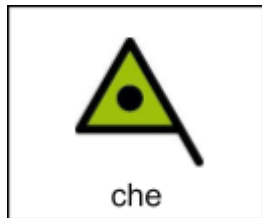
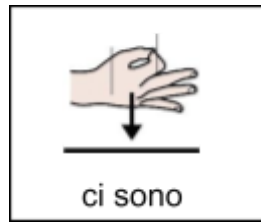
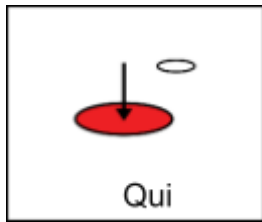
dove



ci sono

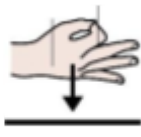


opere artistiche





che



è



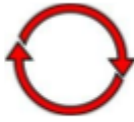
la cattedrale



di Roma



Se cammini



ancora



arrivi



nella zona



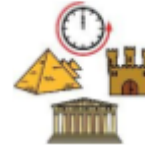
del



Celio



un quartiere



antico

e

e



bello



Prima



di andare



verso



la Via



Appia



vedrai



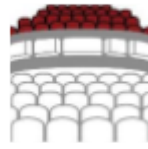
Il Colosseo



chiamato



anche



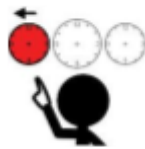
Anfiteatro



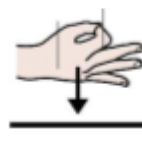
Flavio



dove



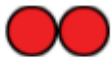
in passato



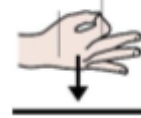
c'erano



spettacoli



Accanto



c'è



l'Arco



di Costantino



che



ricorda



la vittoria



dell'imperatore



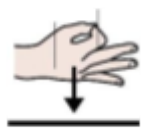
Costantino



Percorrere



questa zona



significa



allontanarsi



dalla città



iniziando



un cammino



più



silenzioso



Il percorso



continua



verso



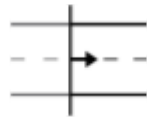
le Terme



di Caracalla



Dopo



si continua



verso Porta



San Sebastiano



una



delle porte



delle Mura



Aureliane



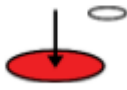
le più



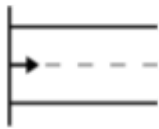
antiche



di Roma



Qui



inizia



la Via Appia Antica



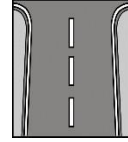
chiamata



anche



regina



delle strade



Durante



il cammino



si vedono



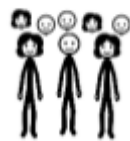
tombe



luoghi sotterranei



con



persone



sepolte

e

e



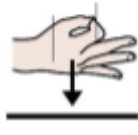
case



romane



Nel cammino



c'è



il silenzio

e

e



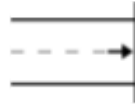
la storia



del passato



Il cammino



finisce



a Castel Gandolfo



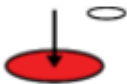
un paese



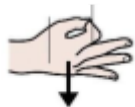
sul



Lago Albano



Qui



c'è



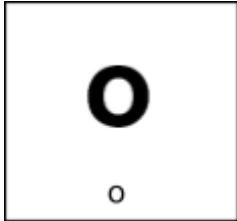
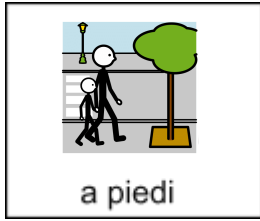
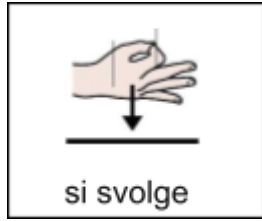
anche



la residenza



del papa



Ha collaborato alla realizzazione del testo
dott.ssa Palma Capuano

Copyright CAA:

Autore dei pittogrammi: Sergio Palao

Origine: ARASAAC (<http://www.arasaac.org>)

Licenza: CC (BY-NC-SA)

Proprietario: Governo di Aragona (Spagna)

Coordinamento generale: Cityfriend srl Società Benefit

